



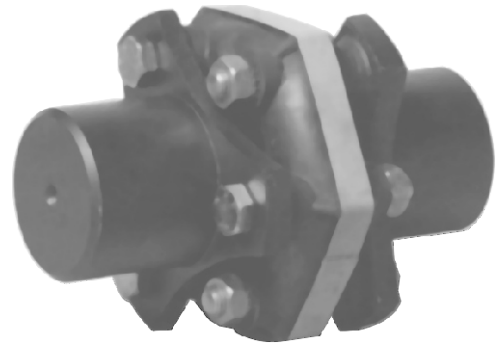
JUBOFLEX COUPLING

JUBOFLEX

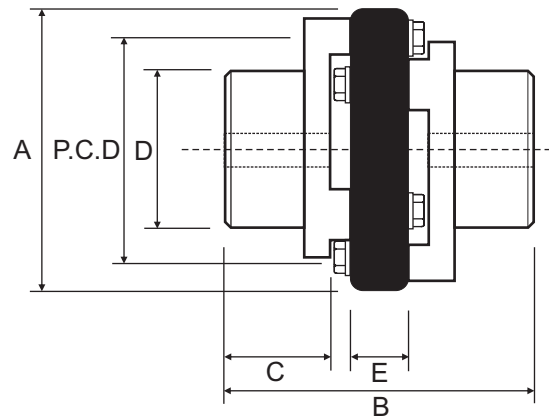
The Juboflex coupling consists of two steel hubs and a precompressed natural rubber element. The four smaller sizes come to suit taper bushes and the other four are pilot bore. The coupling has excellent damping properties and can take high misalignment.

PERFORMANCE DATA

Part No.	Max Bore	Power at 100 RPM kW	Nominal Torque (Nm)	Normal Maximum Speed (RPM)
GJ4	30.0	0.419	40	6000
GJ9	40.0	0.942	90	5000
GJ16	48.0	1.675	160	4500
GJ25	60.0	2.618	250	3500
GJ35	70.0	3.665	350	3000
GJ50	75.0	5.236	500	2800
GJ70	80.0	7.330	700	2400
GJ120	100.0	12.565	1200	2400



DIMENSIONAL DATA



Part No.	Bush Size	Bore		A	B	C	D	E	P.C.D.	No. Bolts
		Min	Max							
GJ4	1108	12.0	30.0	91.0	74.0	20.0	48.0	28.0	65.0	6.0
GJ9	1210	12.0	40.0	117.0	90.0	25.0	60.0	32.0	85.0	6.0
GJ16	1610	12.0	48.0	142.0	106.0	25.0	70.0	46.0	100.0	6.0
GJ25	2012	16.0	60.0	181.0	121.0	30.0	95.0	51.0	132.0	6.0
GJ35	-	-	70.0	202.0	284.0	109.0	105.0	54.0	150.0	6.0
GJ50	-	-	75.0	232.0	322.0	124.0	115.0	62.0	170.0	6.0
GJ70	-	-	80.0	263.0	346.0	133.0	122.0	68.0	190.0	6.0
GJ120	-	60.0	100.0	280.0	486.0	172.0	156.0	78.0	210.0	8.0

